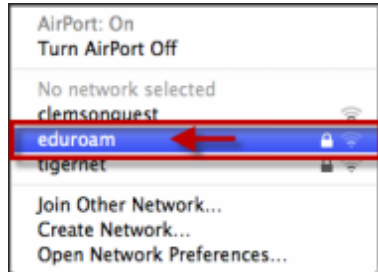




## HOW TO: Connect to eduroam using Mac OS X

1. Click on the **Wi-Fi** icon in the top menu.



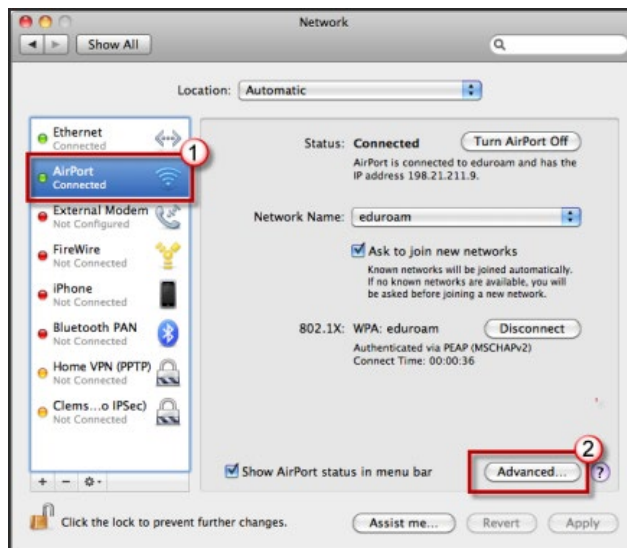
2. Select **eduroam**.
3. When prompted, login to the eduroam network with your **username@clemson.edu** and **password**. (**NOTE:** Do NOT enter it in the format of a Gmail address. (i.e. username@g.clemson.edu) This will NOT work)



4. Then click **OK**. (**NOTE:** If you use Keychain, you will be prompted to save the Wifi password in Keychain.)
5. Next, click on the Apple icon in the top menu.
6. Select System Preferences.



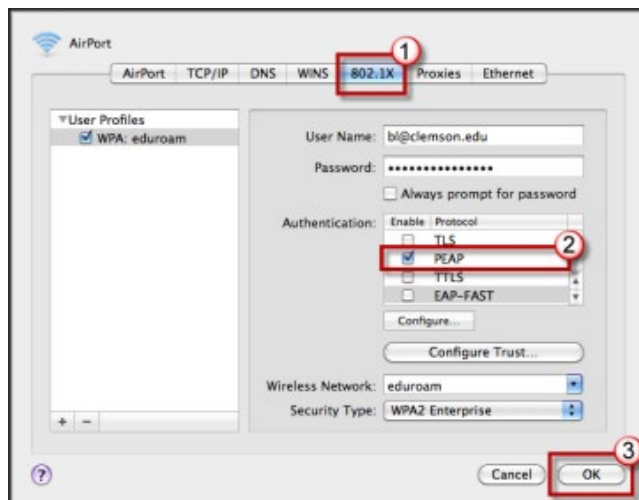
7. Click **Network**.
8. Select **Airport** or **Wi-Fi** in the left column.



9. Then click **Advanced**.
10. Click the **Airport** or **Wi-Fi** tab.



11. Click the **eduroam** network and drag it to the top of the list. (**NOTE:** If you see “tigernet” or “clemsonguest”, remove these from the list by selecting them and clicking the Remove Airport Network button.)
12. Next click the **802.1X** tab.



13. Uncheck any authentication methods other than PEAP.
14. Click **OK**.
15. Then click **Apply** to save the new Network preferences.

\*\*\*If you have any further questions [DARHelpdesk@Lists.Clemson.edu](mailto:DARHelpdesk@Lists.Clemson.edu)

Online URL: <https://hdkb.clemson.edu/phpkb/article.php?id=481>